


MAAI manual standard B2

Manual hands laying machine

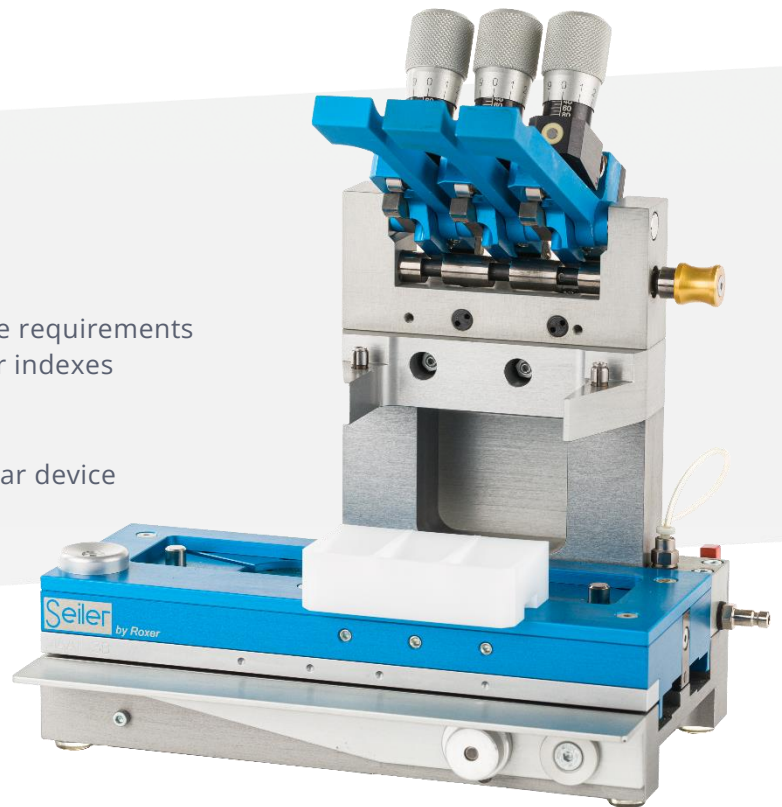
Datasheet, 31.05.2023, V1.1

 Engineered and made in Switzerland

The MAAI Manual standard (3B2, 4B2, 5B2, 7B2) are high-precision machines for the application of central and off-center hands.

Machine functions

- For fitting centered and off-centered hands
- 4 models: 3, 4, 5 and 7 spindles
- Practical, reliable, efficient and compact space requirements
- Hands perfectly and precisely aligned on their indexes
- Can adapt to all hand sizes
- Rapid adjustment of hand driving height
- Rapid caliber changeover thanks to the tool bar device



MAAI manual standard 3B2

Technical specifications

	MAAI 3B2	MAAI 4B2	MAAI 5B2	MAAI 7B2
Driving force limiter :	1 to 6 kg	1 to 6 kg	1 to 6 kg	1 to 6 kg
Hour and minute hand pick-up :	Mechanical	Mechanical	Mechanical	Mechanical
Seconds hand pick-up* :	Mechanical	Mechanical	Mechanical	Mechanical
Counter hand pick-up* :	Vacuum	Vacuum	Vacuum	Vacuum
Weight :	2,7 kg	3,2 kg	3,6 kg	4,5 kg
Dimensions (l/d/h) in mm :	175 x 109 x 197	195 x 109 x 197	215 x 109 x 197	255 x 109 x 197

*Tools : see MAAI Tools data sheet

*Seconds hand vacuum pick-up on request

*Counter hand mechanical pick-up on request

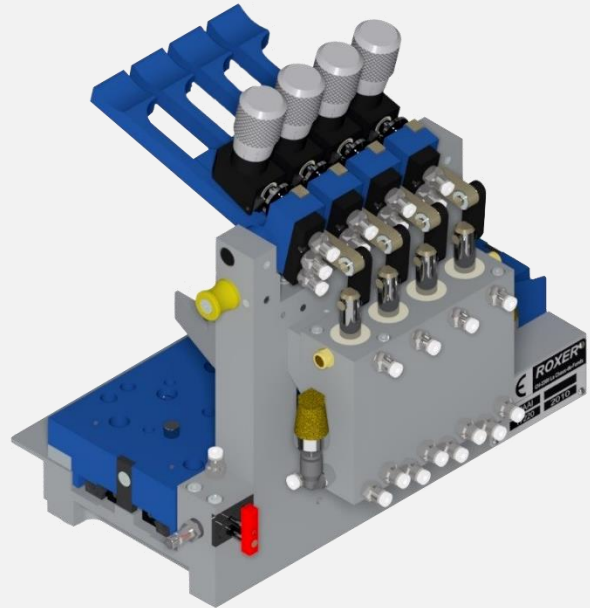
Available options (with DCF PAD)

Datamat for date change

Force sensor

Backlight

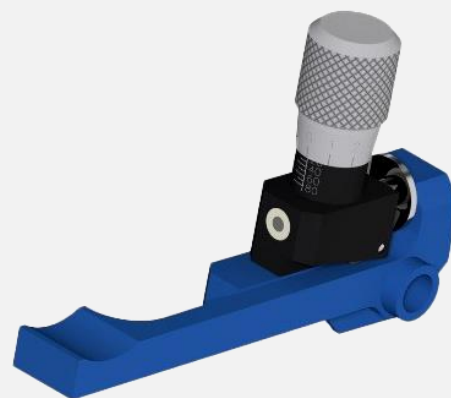
Pneumatic assistance



Allows better visibility when picking up and placing hands.

The pneumatic assistance helps the operator to drive out the hands at high force without the operator having to put force on the lever.

Fuse-type force limiter



The fuse limiter is an adjustable force limiter from 5N to 80N that allows you to set the maximum force when driving the hand.